



Call for Papers — German-Malaysian Workshop Series 2016

“Systems Engineering for Advanced Mechatronics”

3rd International Conference on System-Integrated Intelligence

13-17 June 2016, Paderborn, Germany

Invitation

After successful events in Hannover (2012), Malacca (2013), Bremen (2014) and Bali (2015), the upcoming workshop will be held in Paderborn under the auspices of the 3rd International Conference on System-Integrated Intelligence: New Challenges for Product and Production Engineering (SysInt 2016). The technical program includes research visit to Fraunhofer facilities, universities or companies in the region.

You are cordially invited to join us and spend a marvelous time in Germany.

Important Dates

19 Dec 2015: Abstract Submission

- 21 Dec 2015: Abstract Acceptance
- 14 Feb 2016: Full Paper Submission
- 1 Apr 2016: Reviewer Feedback
- 2 May 2016: Final Paper Submission



Scope

The field of interest includes but not limited to model-based systems engineering, requirements engineering, system integration and tests, verification and validation, virtual engineering and design methodologies in all branches of mechatronics.

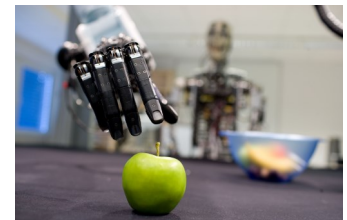


Online Submission

Submit your abstract (max 500 words) using ConfTool under:

www.conftool.net/sysint2016

All accepted papers will be published by Elsevier in “**Procedia Technology**” which will appear online on Sciverse ScienceDirect.



- Further, you will be invited to submit an extended manuscript in a Special Issue of
- ⇒ “**Mechatronics**” published by Elsevier (Impact Factor 1.726) or
 - ⇒ “**Production Engineering**” published by Springer (Scopus) or
 - ⇒ “**Journal of Mechanical Engineering**” published by UiTM (Scopus).



More information at gmworkshop.wordpress.com.

Contact

Dr.-Ing. Cheng Yee Low
Faculty of Mechanical Engineering
Universiti Teknologi MARA
Chengyee.Low@salam.uitm.edu.my

Dr.-Ing. Roman Dumitrescu
Project Group Mechatronic Systems Design
Fraunhofer Institute for Production Technology
Roman.Dumitrescu@ipt.fraunhofer.de

